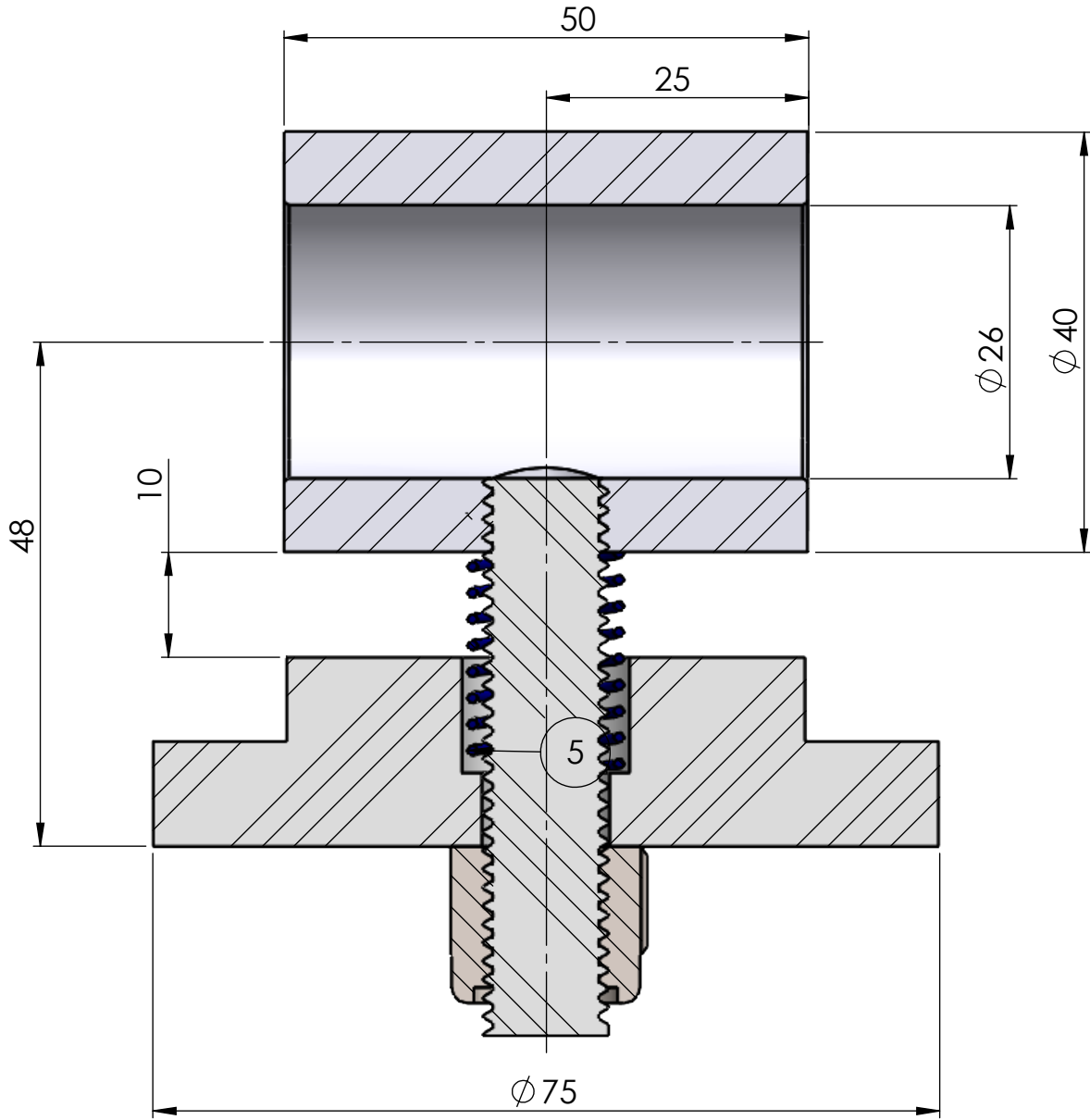
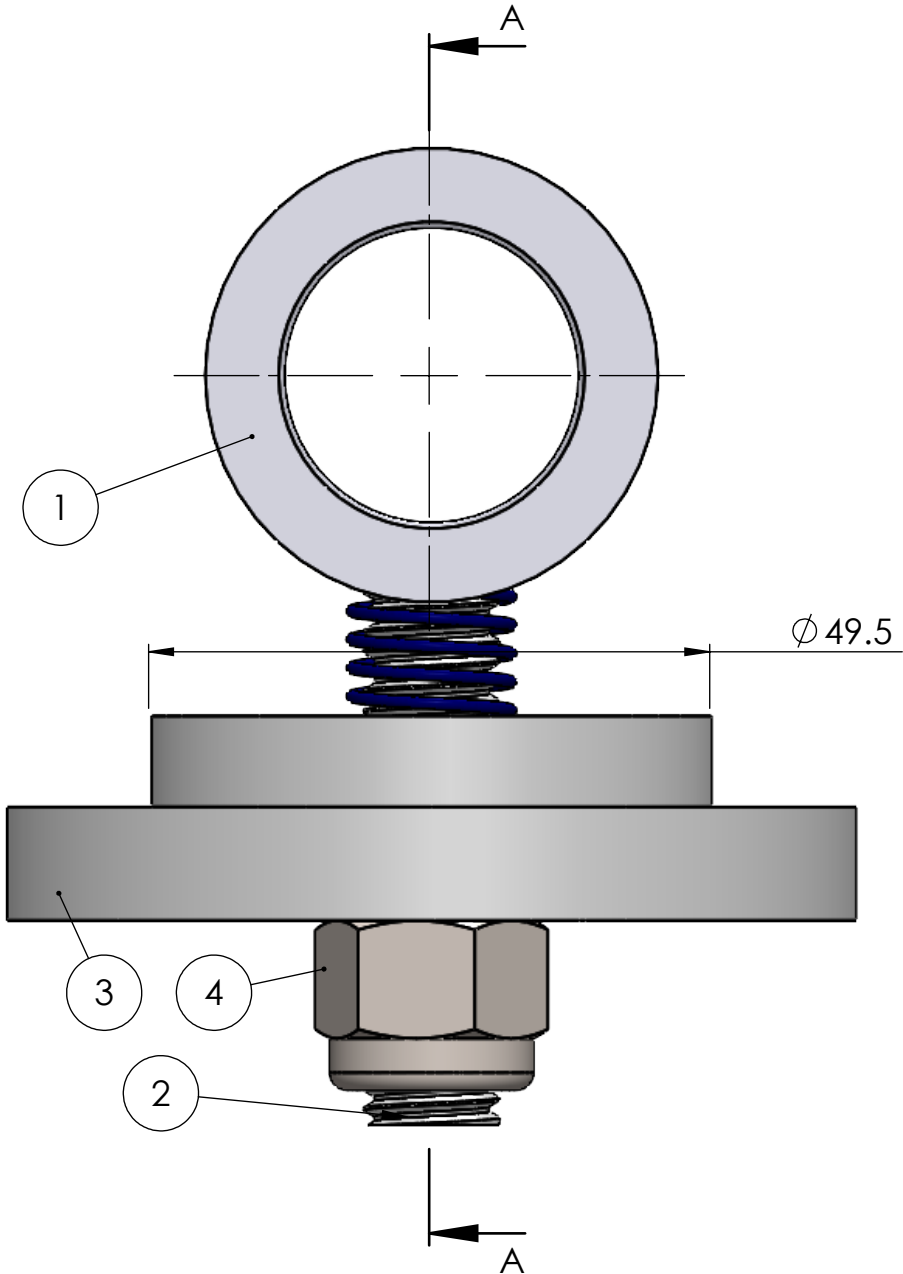
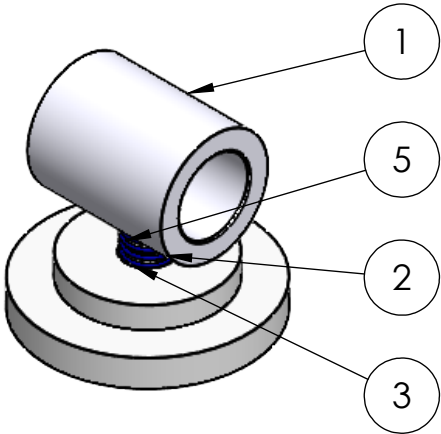

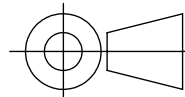


ITEM NO.	DESCRIPTION	MATERIAL	PART NUMBER	QTY.	WEIGHT [kg]
1	BANJO COLLAR	AISI 1018/20 (BCQ)	SWL-P321	1	0.28
2	BANJO ALLTHREAD M12	Gr. 8.8	SWL-P325	1	0.04
3	BANJO CLAMP PLATE	AS1045 - Cold Drawn	SWL-P322	1	0.44
4	NYLOC NUT M12		NYLOC NUT M12	1	2.696
5	SPRING SHORT	SPRING STEEL	SWL-P501	1	0.00



SECTION A-A

<div></div> <div>2 Valentine Street Ballarat, Victoria, 3353, Australia TELEPHONE: +613 5337 5700 FAX: +613 5336 4524 web: www.asema.com.au e-mail: sales@asema.com.au</div>	© THIS DRAWING IS PROPERTY OF ASEMA International PTY LTD. PUBLICATION OF INFORMATION OR DISCLOSURE TO ANY THIRD PARTY IN ANY FORM IS PROHIBITED WITHOUT WRITTEN CONSENT.	F E D C B A REV			PROJECTION:  THIRD ANGLE 			MATERIAL:  SEE PARTS LIST		COMPANY:  Stute Wood Lathes					
							STOCK SIZE:		PROJECT:  Stutey 3040 Lathe						
	UNLESS OTHERWISE SPECIFIED: DIMENSIONS ARE IN MILLIMETERS TOLERANCES: No Decimal Points: ±0.5mm One Decimal Point: ±0.1mm Two Decimal Points: ±0.02mm Angular: ±0.5°			DRAWN BY:  P Stute			DRAWN DATE:  12/12/2024			SOURCE:		TITLE:  Banjo Clamp			
				CHECKED BY:			CHECKED DATE:			FINISH:		FILE NAME:  SWL-A14		SHEET:  1 OF 1	
				SHEET SIZE:  A3			SCALE:  1.5:1		QTY/SET:  1		WEIGHT [kg]:  0.77		PART NUMBER:  SWL-A14		REVISION:  A
	REMOVE ALL BURRS & BREAK SHARP EDGES		DESCRIPTION	DATE											